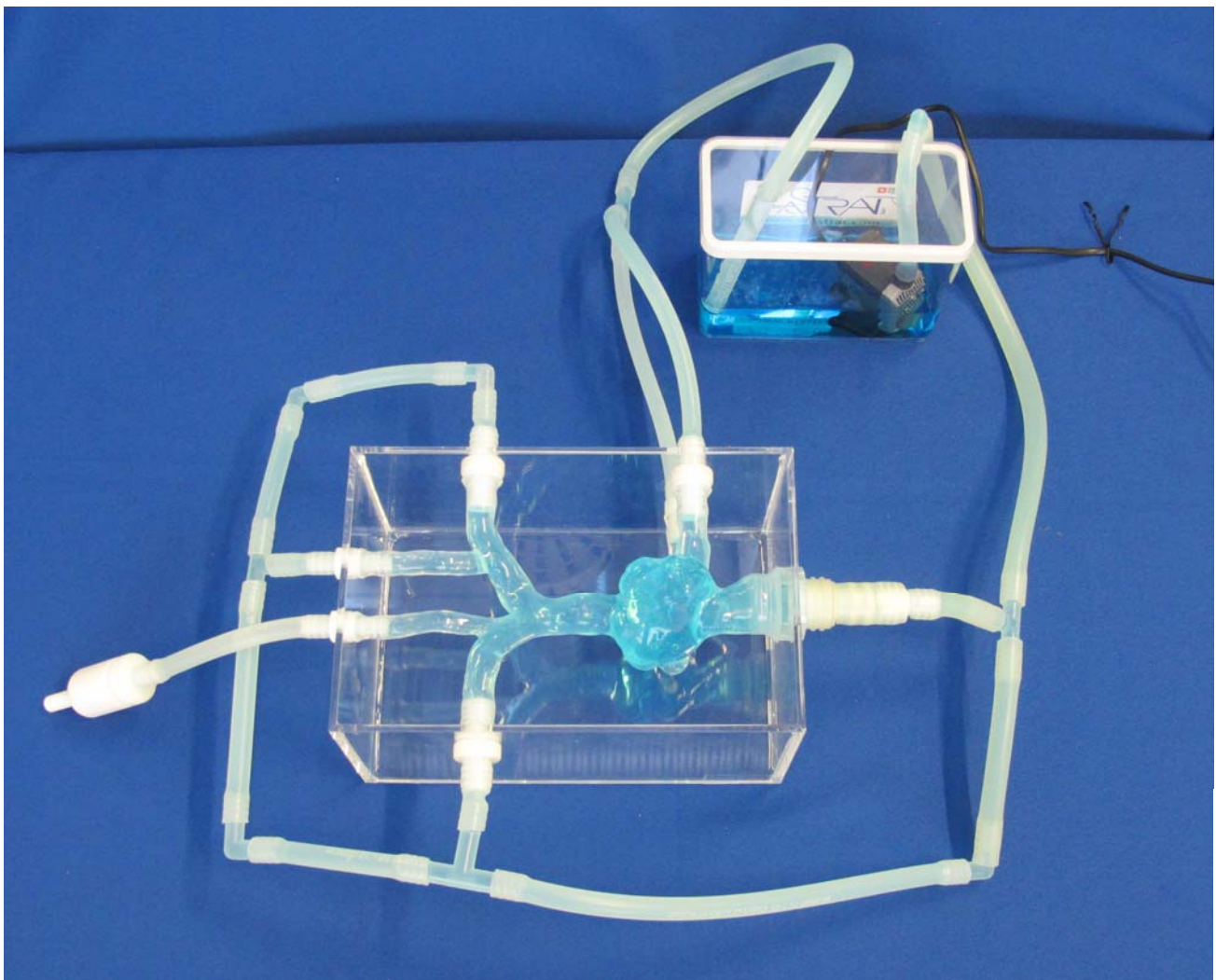




Venous Heart model reference V-T-S-N-001+ with a tank and a pump to work in a closed water circulation:

This model can easily be connected to our abdominal model: Ref V-A-S-N-001+
Ready for work and training



ELASTRAT's in vitro models respect human anatomy and are designed for the development and demonstration of stents, coils and catheters. They provide a realistic environment for the simulation of endovascular procedures, pre-surgery training, studies, and teaching purposes for interventionists.