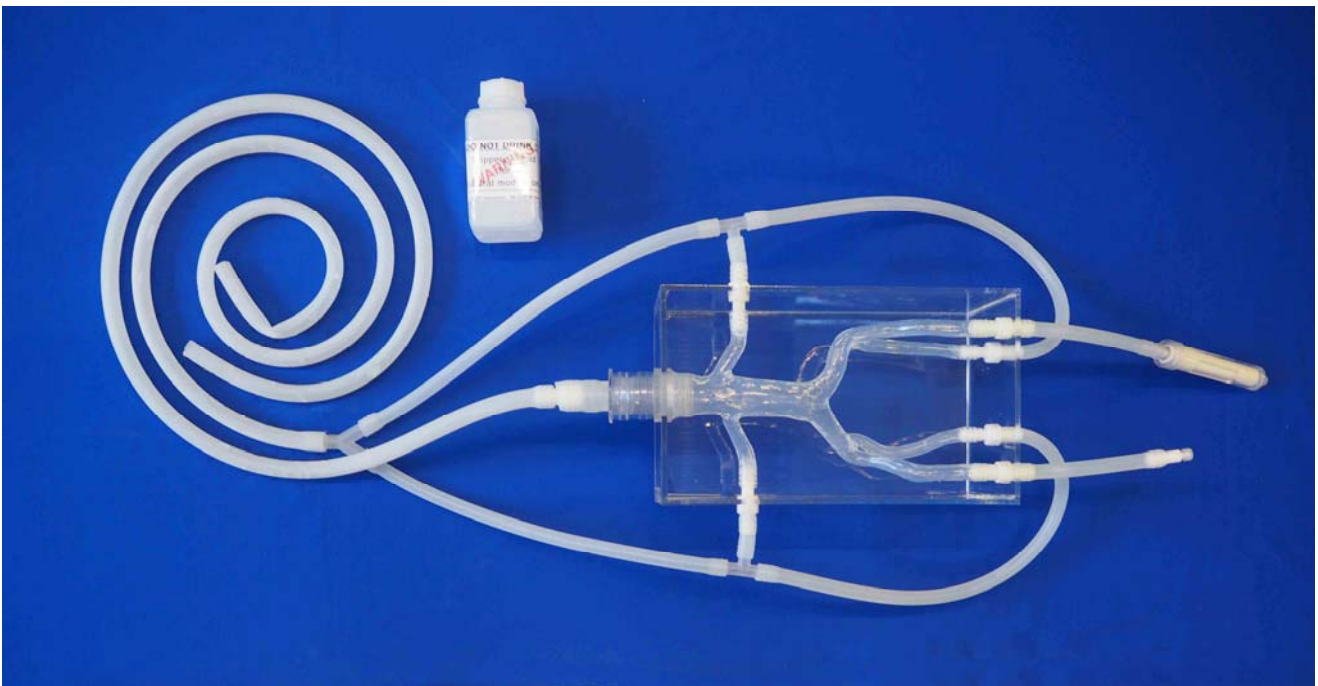




Venous abdominal model reference V-A-S-N-001+ Ready to connect to your tank and a pump circulation:

This model can also work with our venous Heart model: Ref V-T-S-N-001+



ELASTRAT's in vitro models respect human anatomy and are designed for the development and demonstration of stents, coils and catheters.

They provide a realistic environment for the simulation of endovascular procedures, pre-surgery training, studies, and teaching purposes for interventionists.