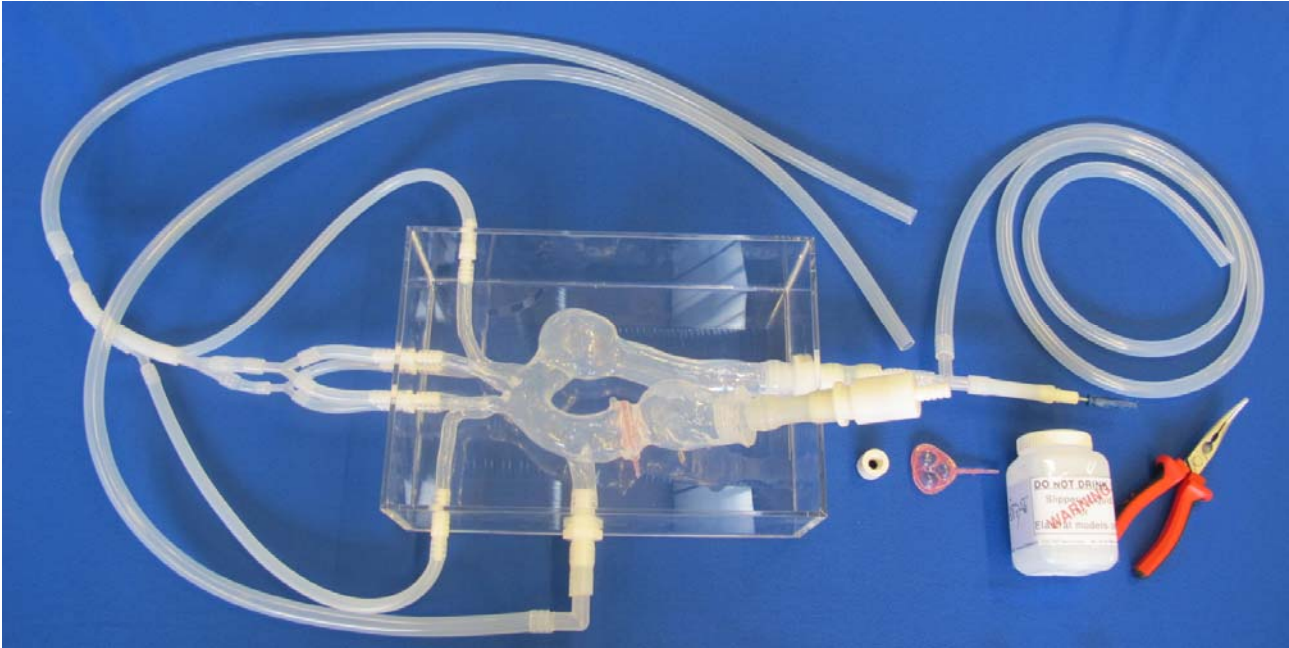


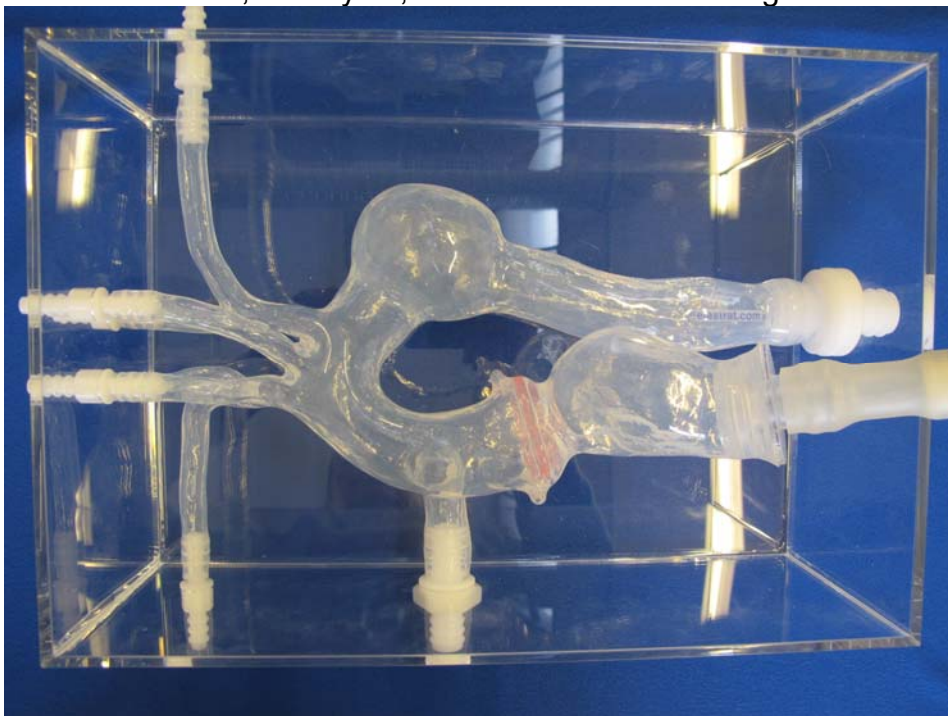


Thoracic model Ref: T-S-A-007+

Thoracic model with aneurysm, left ventricle and interchangeable aortic valve.
Model ready to work in a closed water circuit with pump.



Model with aortic arch, aneurysm, left ventricle and exchangeable aortic valve



ELASTRAT in vitro models respect human anatomy and are designed for the development and demonstration of stents, coils and catheters. They provide a realistic environment for the simulation of endovascular procedures, pre-surgery training, studies and teaching purposes for interventionists.