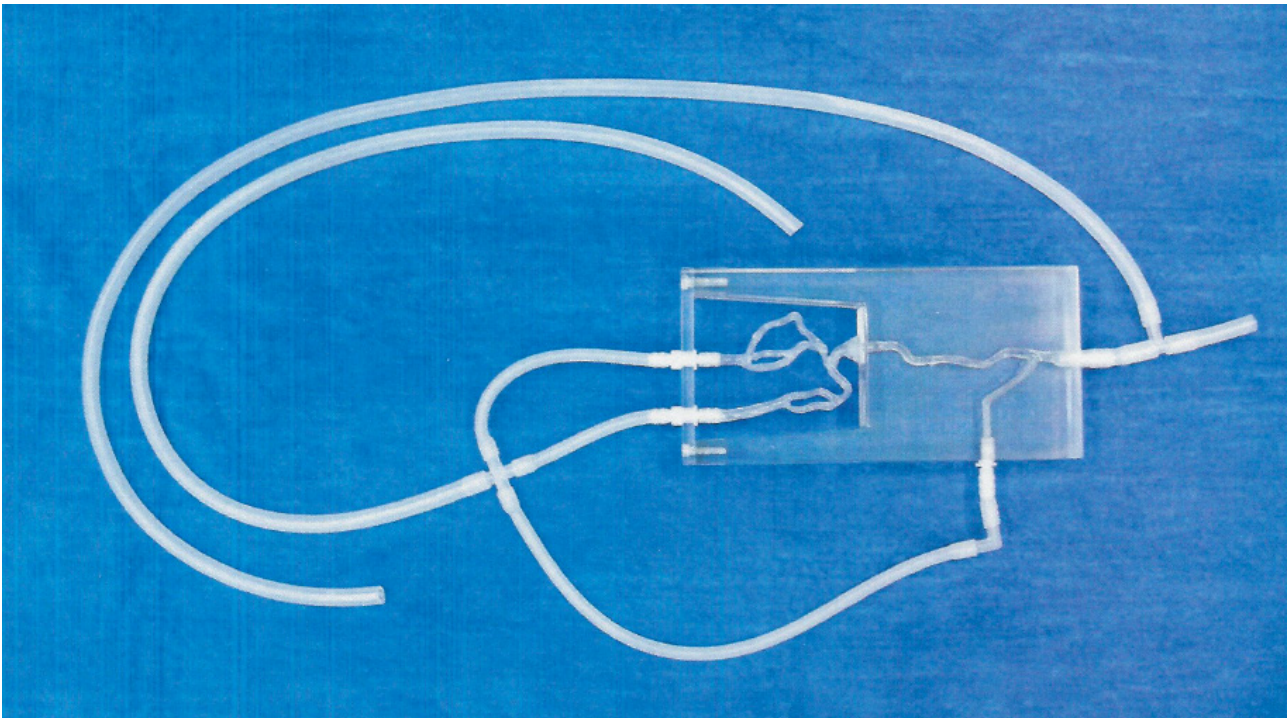




# STROKE Model with a rigid frame and a soft silicone model

## Model Reference 102



This model contains:

A large part in a transparent rigid material shown as a U frame, the soft silicone Head model and the plastic tubes and connectors to be connected to a closed water circuit.

ELASTRAT in vitro models respect human anatomy and are designed for the development and demonstration of stents, coils and catheters. They provide a realistic environment for the simulation of endovascular procedures, presurgery training, studies and teaching purposes for interventionists.

Elastrat replicas are compatible with modern imaging modalities such as digital subtraction angiography, computed tomography and magnetic resonance imaging. Providing the use of an adequate circulating fluid, Doppler techniques can also be performed. The in vitro models transparency to light makes them suitable for video and photographic monitoring.