

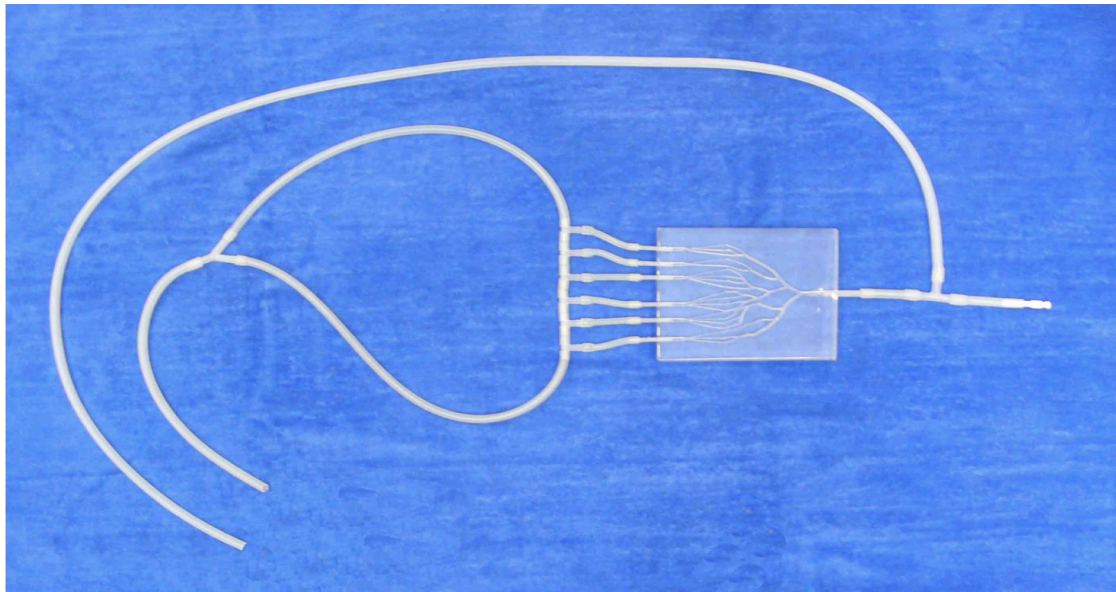


## RIGID Head and Neck palm model Ref: 101-2+

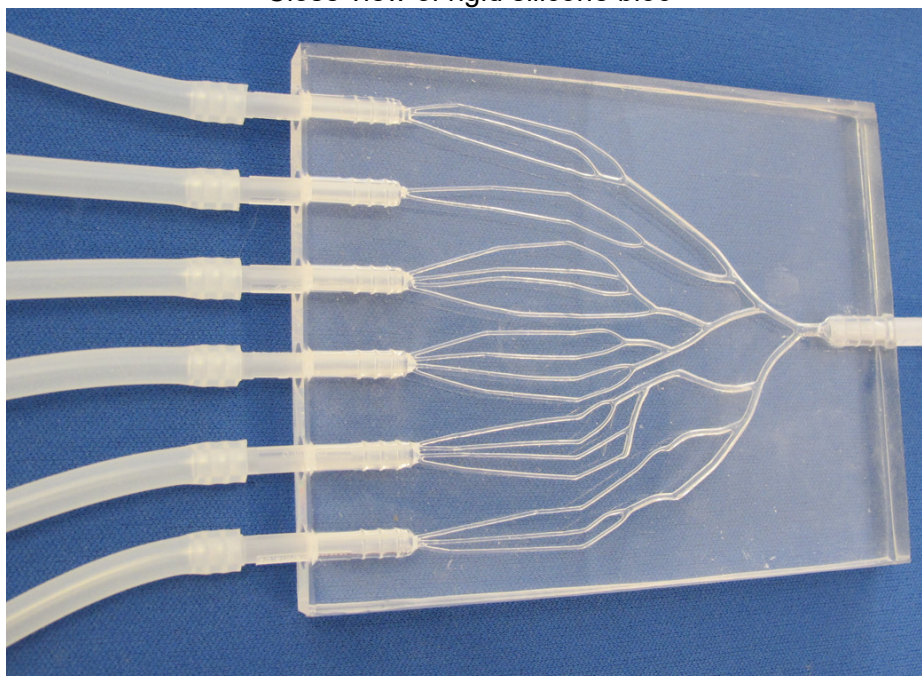
**Arterio-venous palm model** available in a transparent rigid silicone

(This mode I is longer as Ref 101 -1)

### Ref: 101-2 Arterio-Venous model



Close view of rigid silicone bloc



This model simulates part of an arterio -venous malformation. This rectangular model is particularly indicated for embolization trainings with Onyx or similar products .