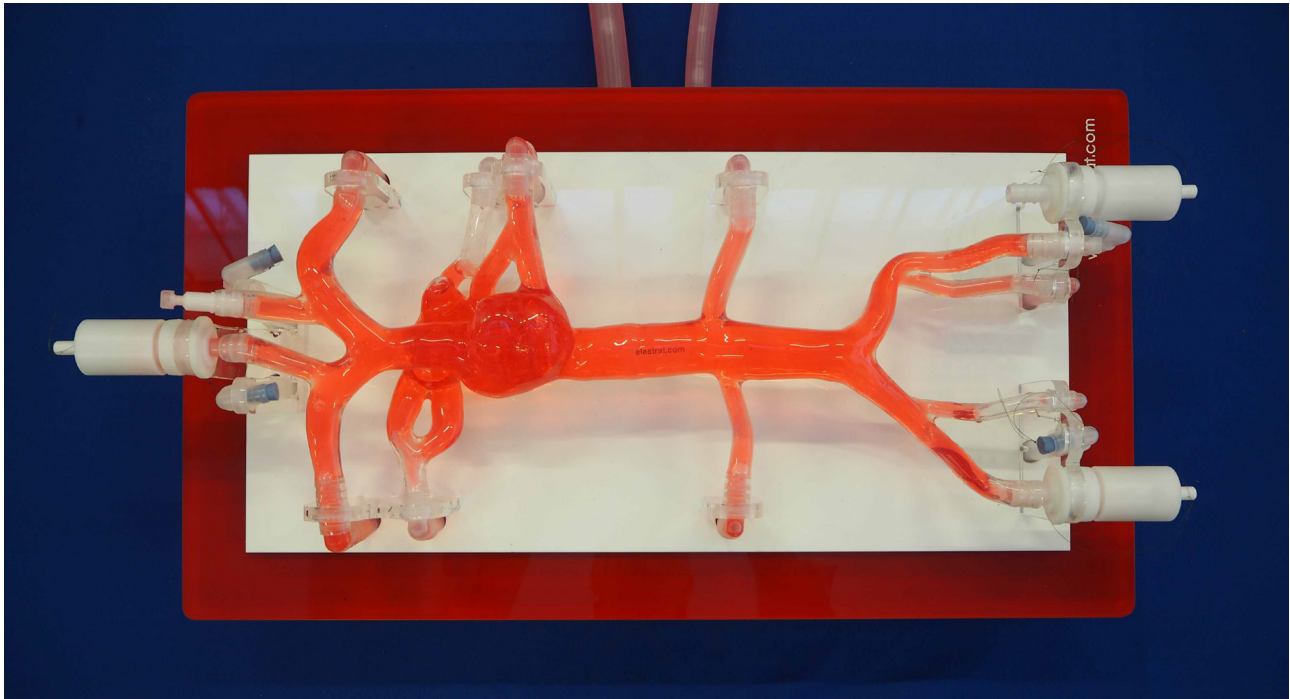




## Thoracic-Abdominal venous Heart model

Exhibition model Reference V-T-S-N-021+:



This model represents the venous right side of Heart with the right atrium, the Internal jugulars, the subclavian the superior and inferior Vena Cava, the right atrium, the pulmonary veins, the renals, common iliac and femoral veins.

ELASTRAT's in vitro models respect human anatomy and are designed for the development and demonstration of stents, coils and catheters. They provide a realistic environment for the simulation of endovascular procedures, pre-surgery training, studies and teaching purposes for interventionists. **This model is also ideal to be exhibited on booths.**

Elastrat's replicas are compatible with modern imaging modalities such as digital subtraction angiography, computed tomography and magnetic resonance imaging. The in vitro models transparency to light makes them suitable for video photographic monitoring.

The Elastrat team wishes you a nice work with this model.

**Swiss Quality Models manufactured by Elastrat in Geneva, Switzerland.  
These delivered models are Elastrat's Trade Mark deposited models.**