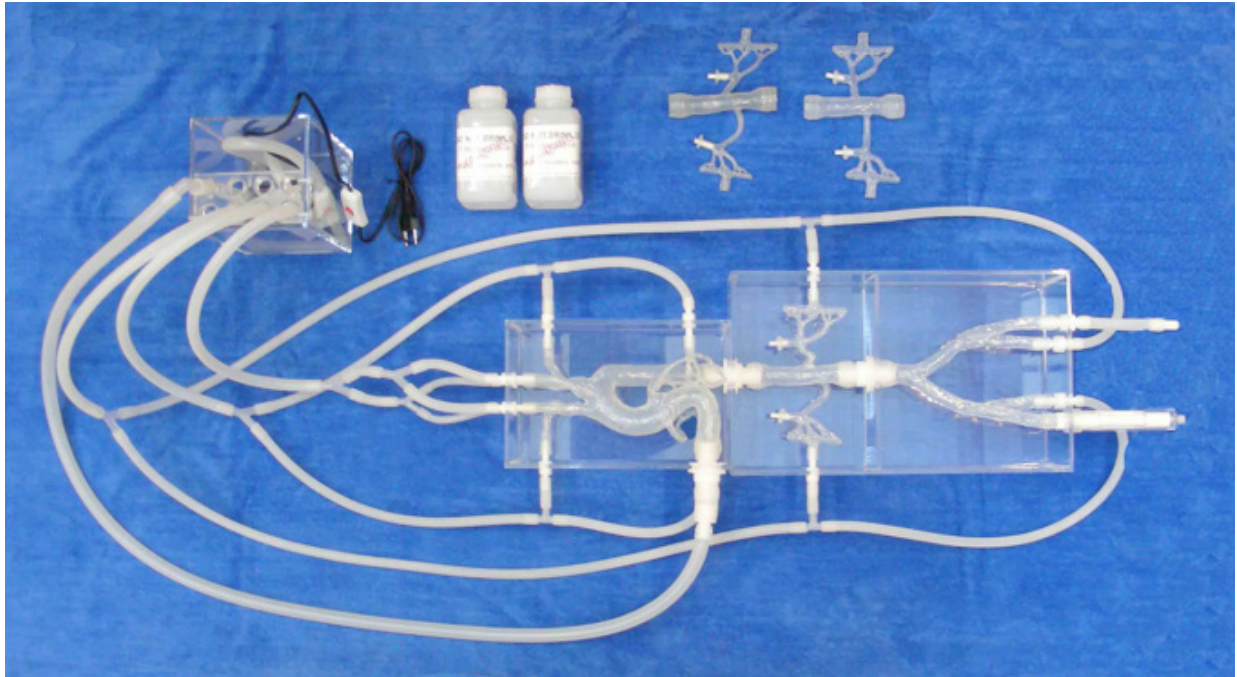




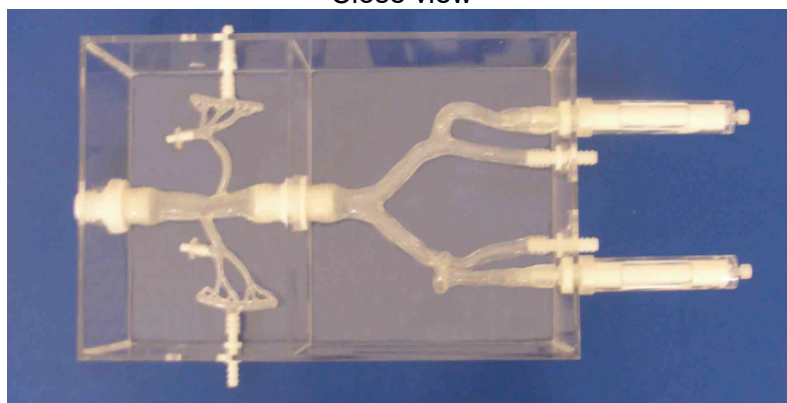
Abdominal iliac model Ref: A-S-N-R-Ev-030+ with evacuable renals at choice 30°, 60° or 90°

Reference for the Renals: A-S-N-R-Ev-030-30° renals, 60° renals or 90° renals.
Reference for the Iliacs: A-S-N-I-030-Normal, A-S-N-I-030-Loop, A-S-N-I-030-Severe

You have choice between three different renal models and three different abdominal iliacs



Close view



ELASTRAT in vitro models respect human anatomy and are designed for the development and demonstration of stents, coils and catheters. They provide a realistic environment for the simulation of endovascular procedures, pre-surgery training, studies and teaching purposes for interventionists.