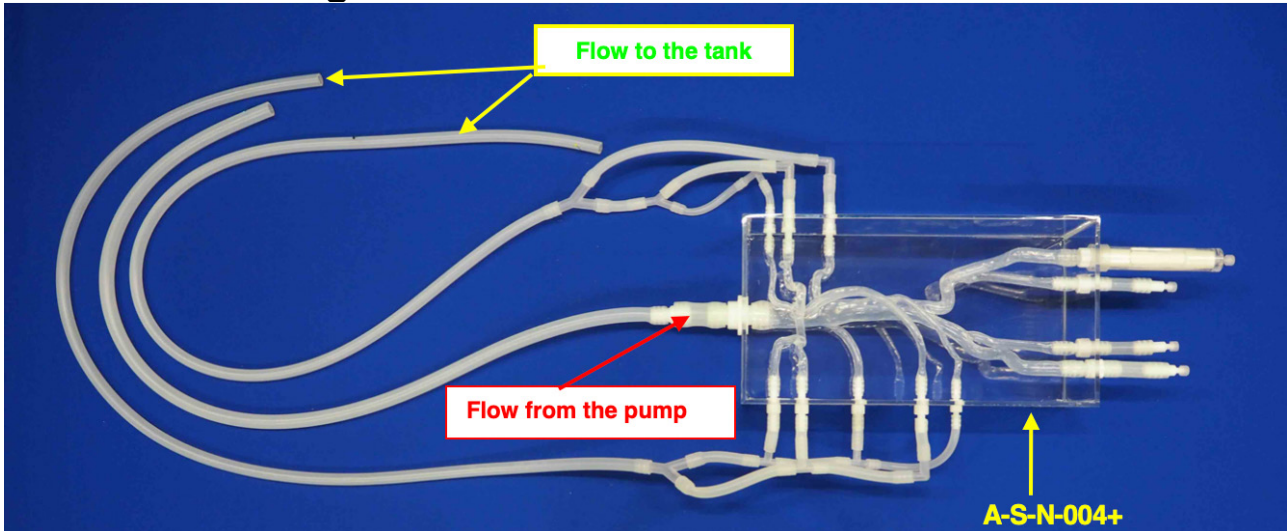




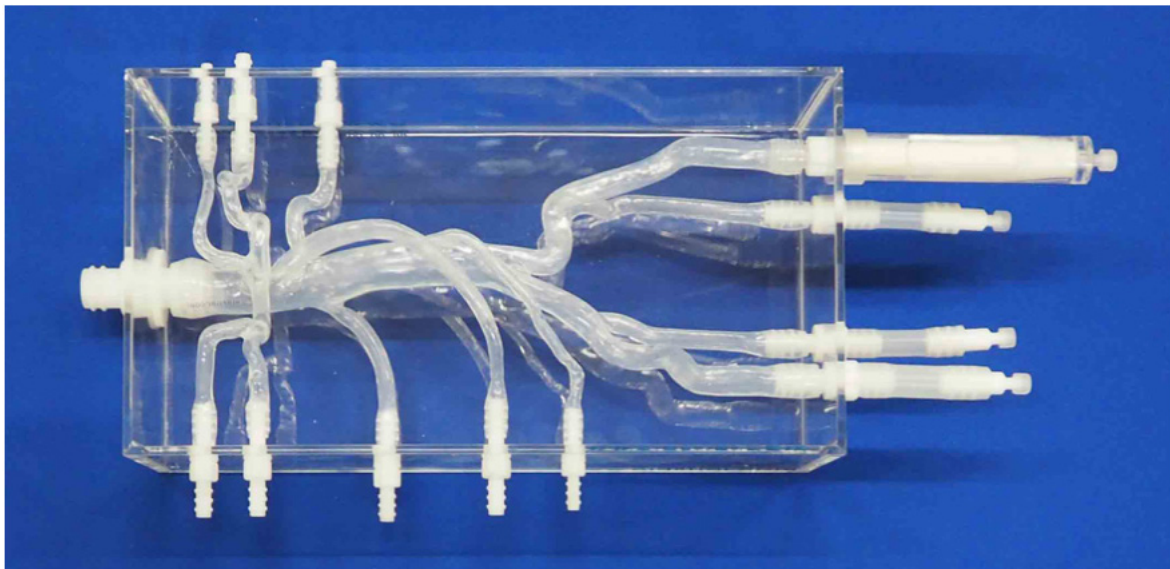
Abdominal large model Ref: A-S-N-004+ left tortuous iliac (Ref A-S-N-003+ has straight iliacs)

This model is ready to work in a closed water circuit with a pump.

Soft silicone large model with celiac trunc and left tortuous iliac



Close view



ELASTRAT in vitro models respect human anatomy and are designed for the development and demonstration of stents, coils and catheters. They provide a realistic environment for the simulation of endovascular procedures, pre-surgery training, studies and teaching purposes for interventionists.