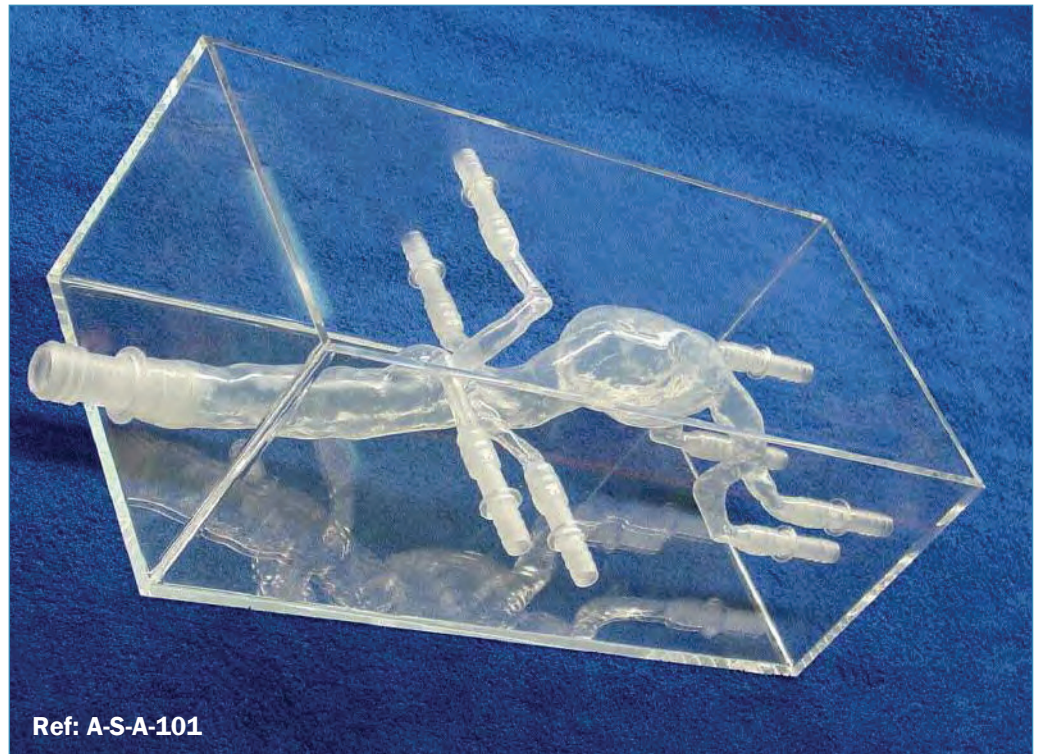




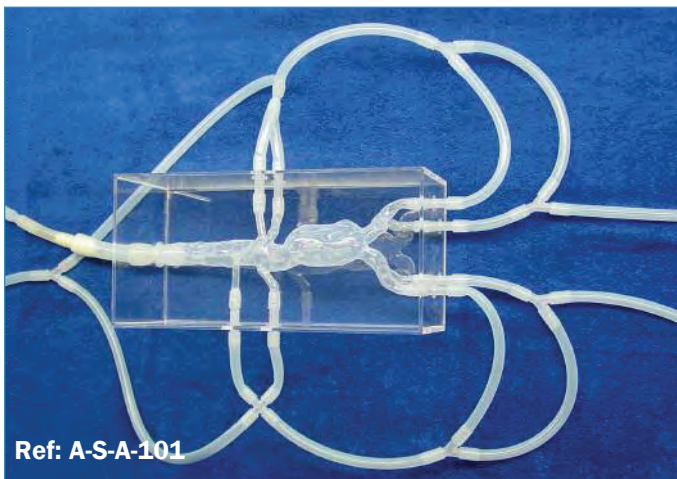
**ABDOMINAL FLEXIBLE  
REF: A-S-A-101**

ELASTRAT in vitro models respect human anatomy and are designed for the development and demonstration of stents, coils and catheters. They provide a realistic environment for the simulation of endovascular procedures, pre-surgery training, studies and teaching purposes for interventionists.

**ABDOMINAL AORTA ANEURYSM**



Ref: A-S-A-101



Ref: A-S-A-101

Top view with tubing from and back to the pump.



Ref: A-S-A-101

Side view.

ELASTRAT replicas are compatible with modern imaging modalities such as digital subtraction angiography, computed tomography and magnetic resonance imaging. Providing the use of an adequate circulating fluid, Doppler techniques can also be performed. The in vitro models transparency to light makes them suitable for video and photographic monitoring.