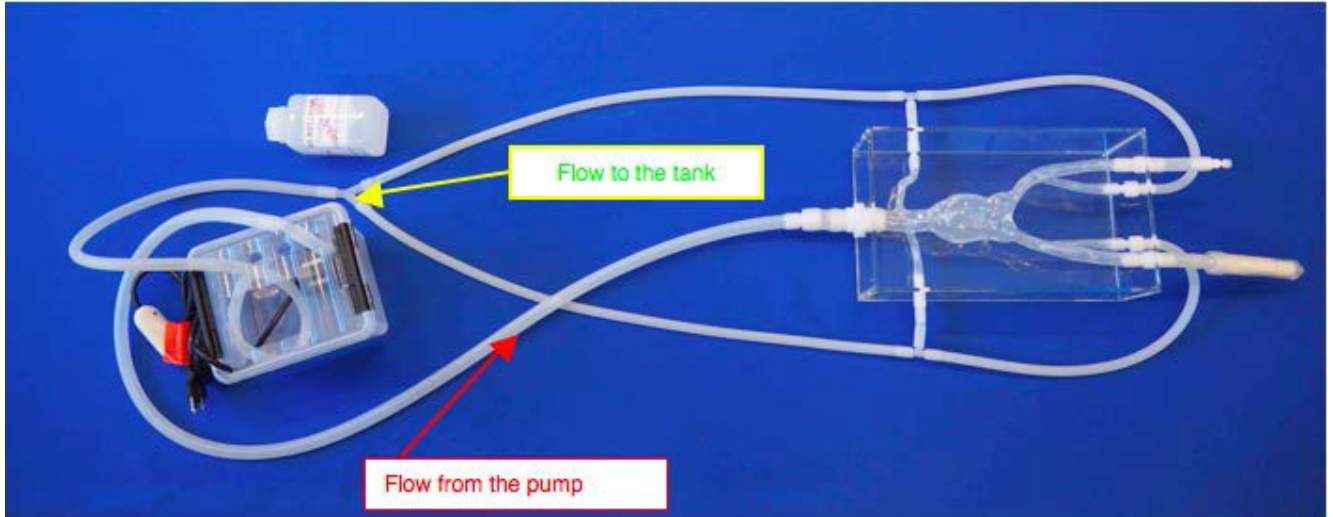


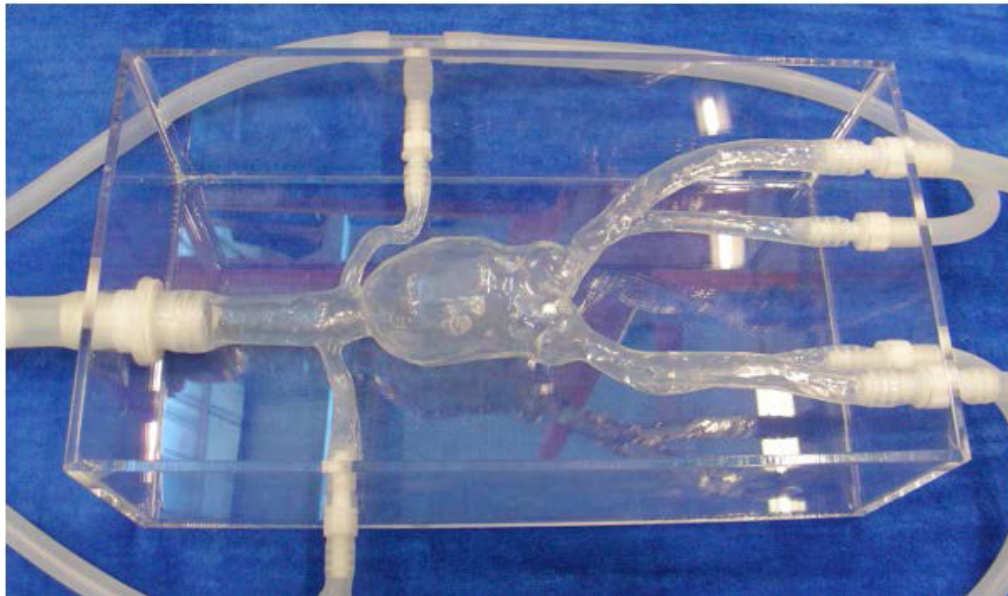


## Abdominal model Ref: A-S-A-004+ medium-large aneurysm

If desired, this model is ready to work in a closed water circuit with a pump.



Closer view



Elastrat in-vitro models respect human anatomy and are designed for the education, development of stents, coils and catheters. They provide a realistic environment for the simulation of endovascular procedures, pre-surgery trainings, studies and teaching purposes for interventionists.

Elastrat in-vitro phantoms are compatible with modern imaging modalities such as digital subtraction angiography, computed tomography and magnetic resonance imaging. Providing the use of an adequate circulation fluid, Doppler techniques can also be performed. The training models transparency to light makes them suitable for video and photographic monitoring.