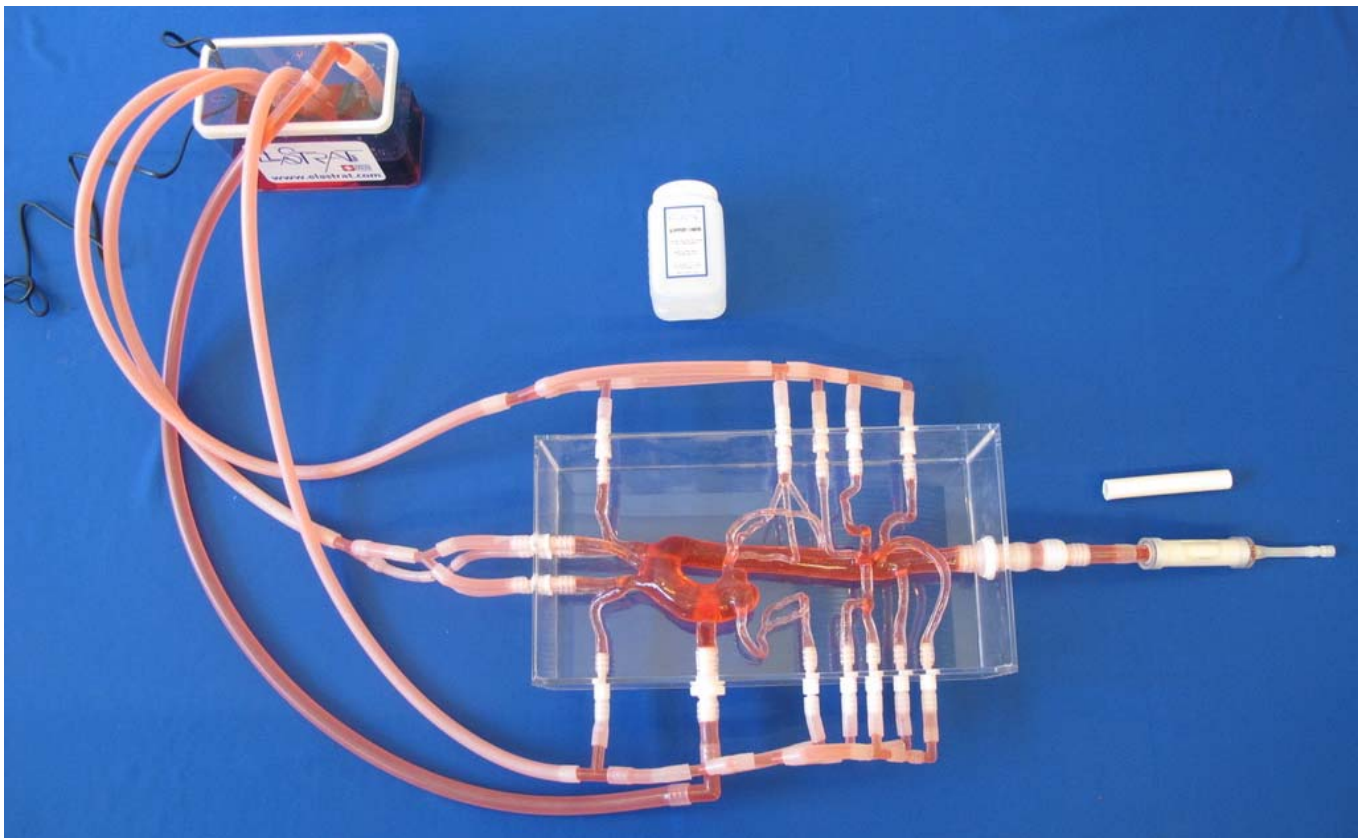




Thoracic Abdominal model Ref: T-S-N-009+

Aortic Arch model with descending aorta, coeliac trunk and renals.

Model ready to work in a closed water circuit with a continuous flow pump
A peristaltic pump can also easily be plugged to this model.



ELASTRAT's in vitro models respect human anatomy and are designed for the development and demonstration of stents, coils, and catheters. They provide a realistic environment for the simulation of endovascular procedures, pre-surgery training, studies and teaching purposes for interventionists.

Elastrat replicas are compatible with modern imaging modalities such as digital subtraction angiography, computed tomography, and magnetic resonance imaging. Providing the use of an adequate circulating fluid, Doppler techniques can also be performed. The in vitro model's transparency to light makes them suitable for video and photographic monitoring.