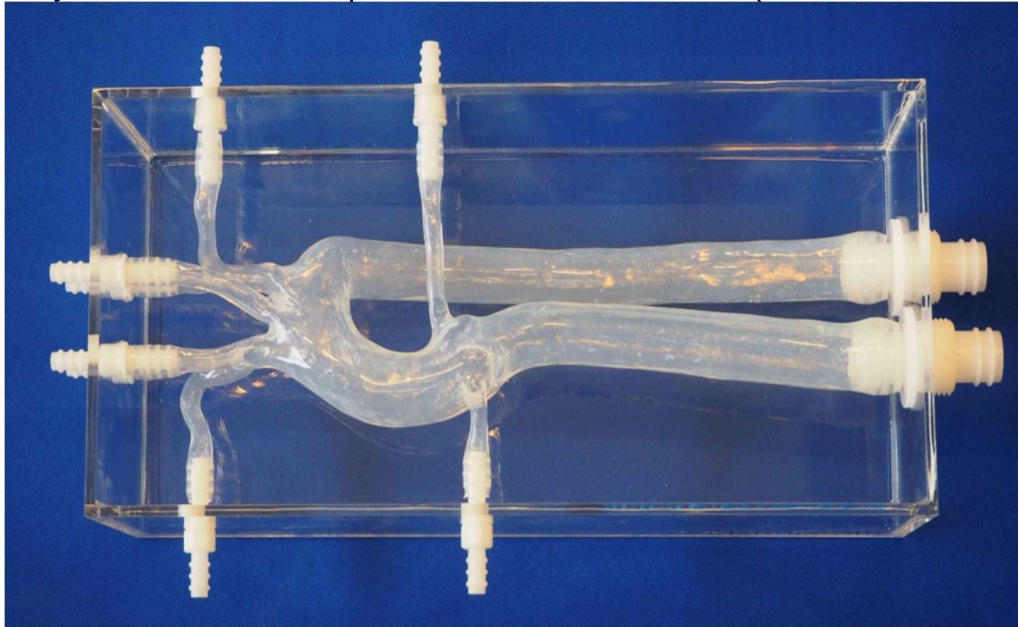


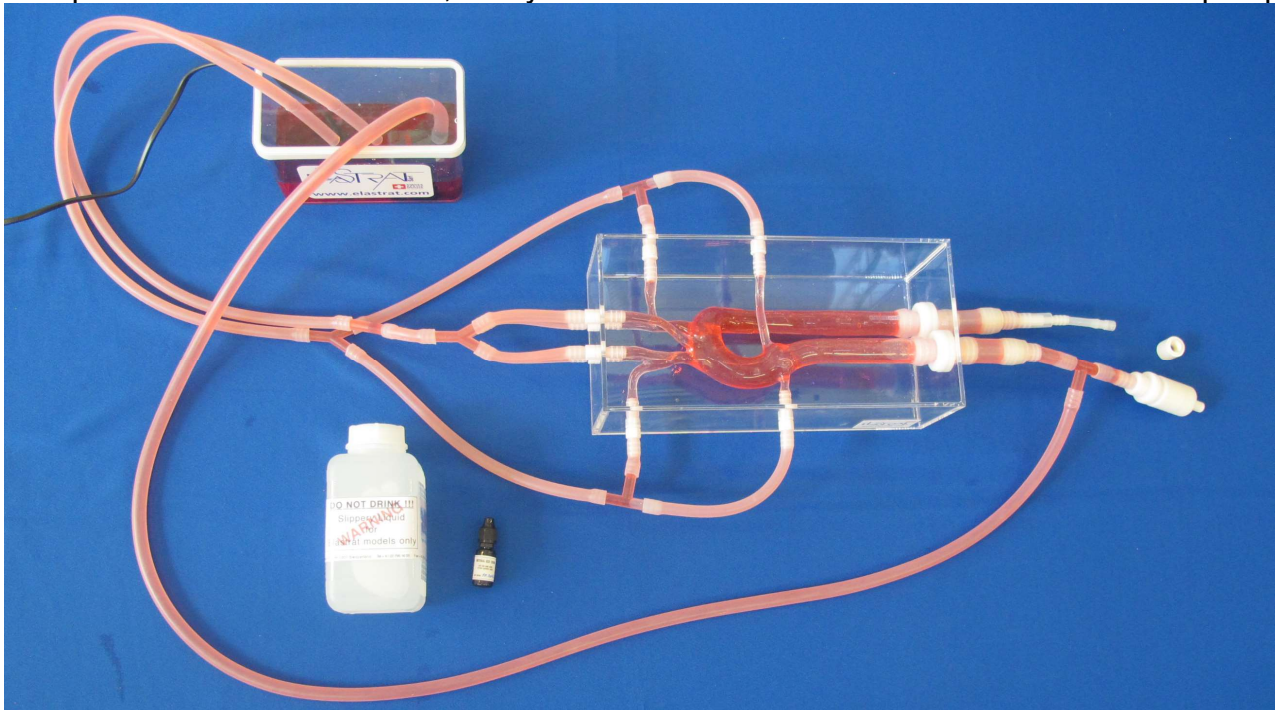


## Thoracic model Ref: T-S-N-005+ prolonged descending aortic arch

With entry of flow at three-cusp. This model shows a short part of the coronaries



Complete model with the tubes, ready to work in a closed water circuit with tank and pump



ELASTRAT's in vitro models respect human anatomy and are designed for the development and demonstration of stents, coils and catheters. They provide a realistic environment for the simulation of endovascular procedures, pre-surgery training, studies, and teaching purposes for interventionists.