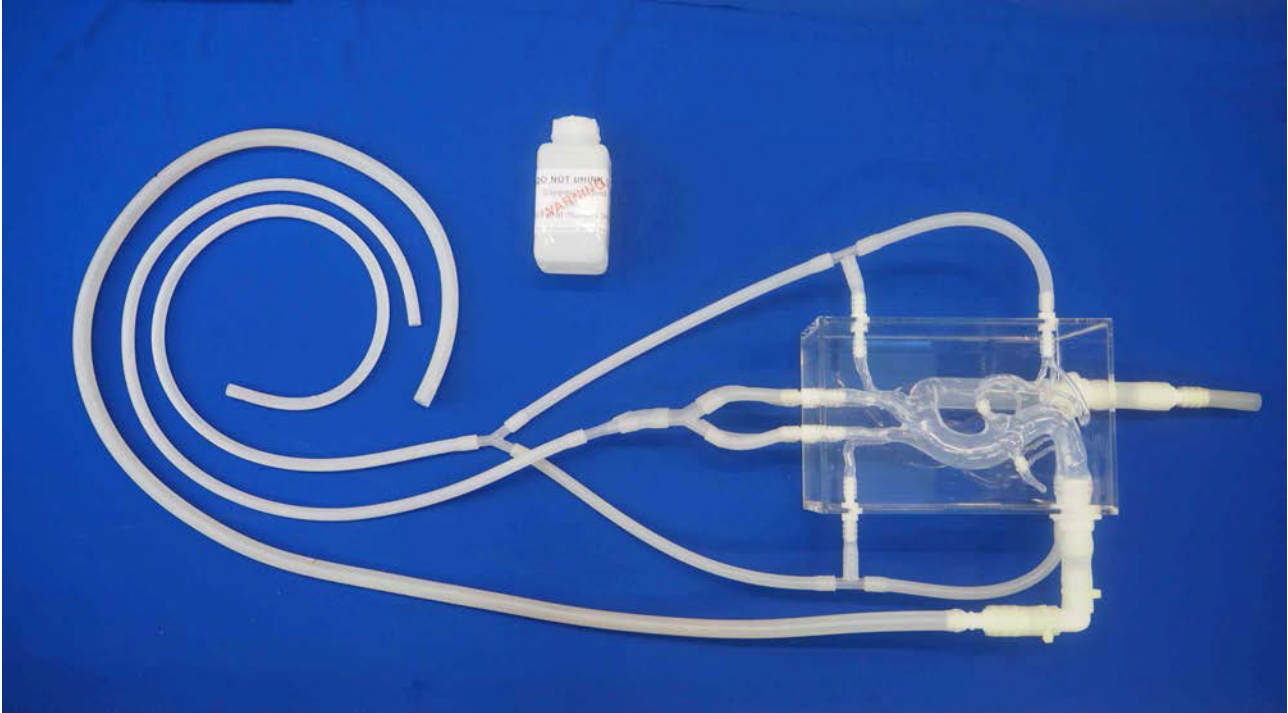




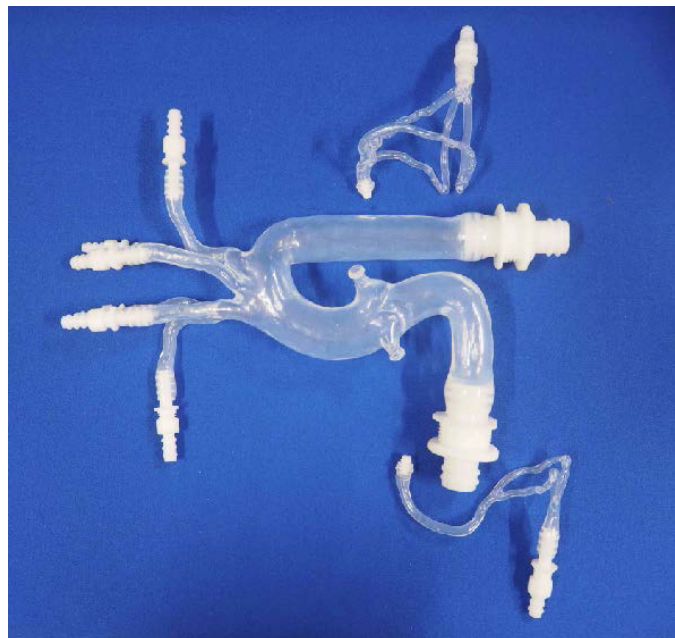
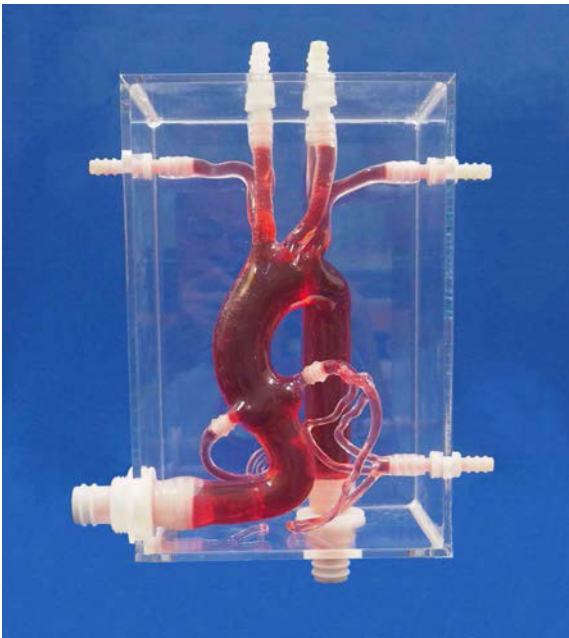
Thoracic model Ref: T-S-N-004-v2+ = 2nd version (3-cusp entry)

If desired, this model is ready to work in a closed water circuit with a pump.



Coloured flexible model

Model in detail



ELASTRAT in vitro models respect human anatomy and are designed for the development and demonstration of stents, coils and catheters. They provide a realistic environment for the simulation of endovascular procedures, presurgery training, studies and teaching purposes for interventionists.