

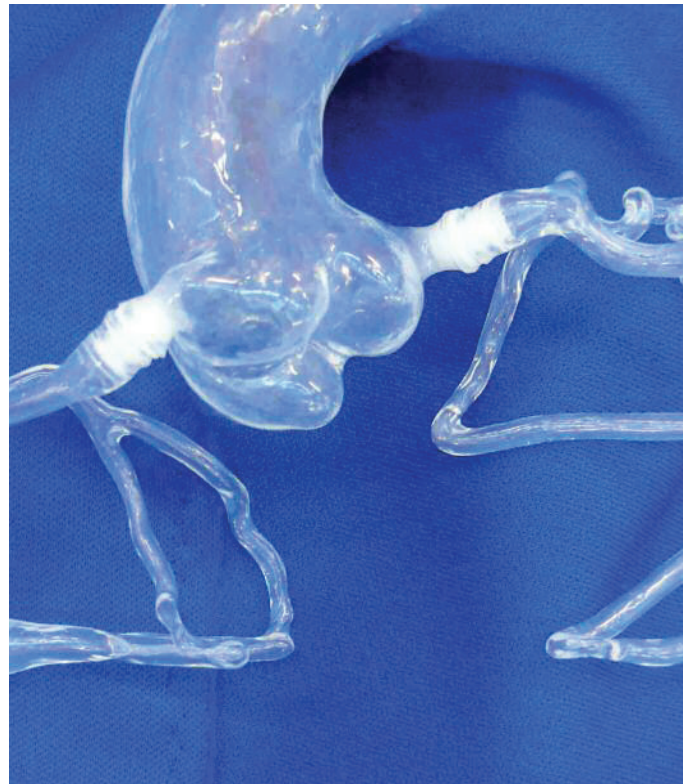
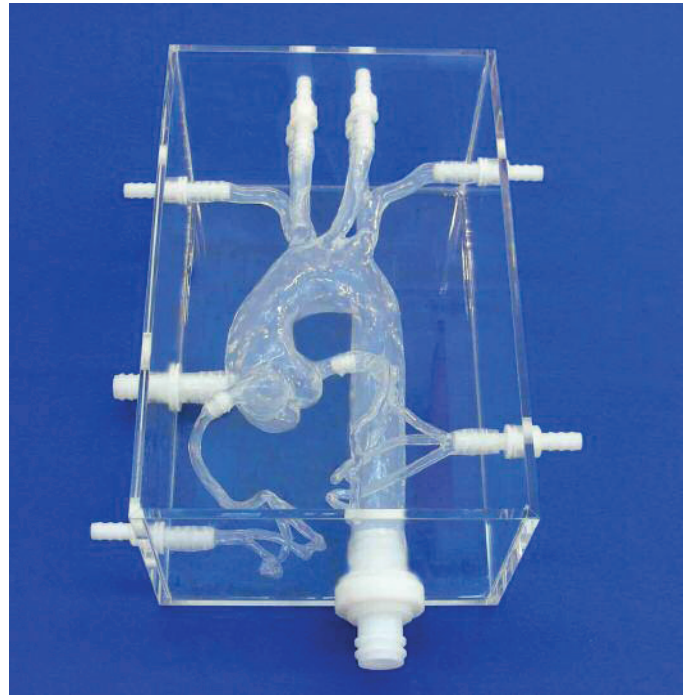


## THORAX FLEXIBLE REF: T-S-N-004

This model corresponds to the normal aortic arch model (Ref T-S-N-001) with the addition of the left and right interchangeable coronary arteries. The right coronary artery includes the marginal and posterior interventricular arteries, the left coronary artery includes the left anterior interventricular and the circumflex arteries.

The particularity of this model is to possess removable coronaries. Should you have deployed a stent you can take your device easily out or also replace the coronaries by new ones. Should you need customized coronaries made to a specifically designed pathology corresponding to your trial or training needs, this request will be developed and finalized with Elastrat's team.

## SOFT NORMAL AORTIC ARCH MODEL WITH INTERCHANGEABLE CORONARIES



ELASTRAT replicas are compatible with modern imaging modalities such as digital subtraction angiography, computed tomography and magnetic resonance imaging. Providing the use of an adequate circulating fluid, Doppler techniques can also be performed. The in vitro models transparency to light makes them suitable for video and photographic monitoring.