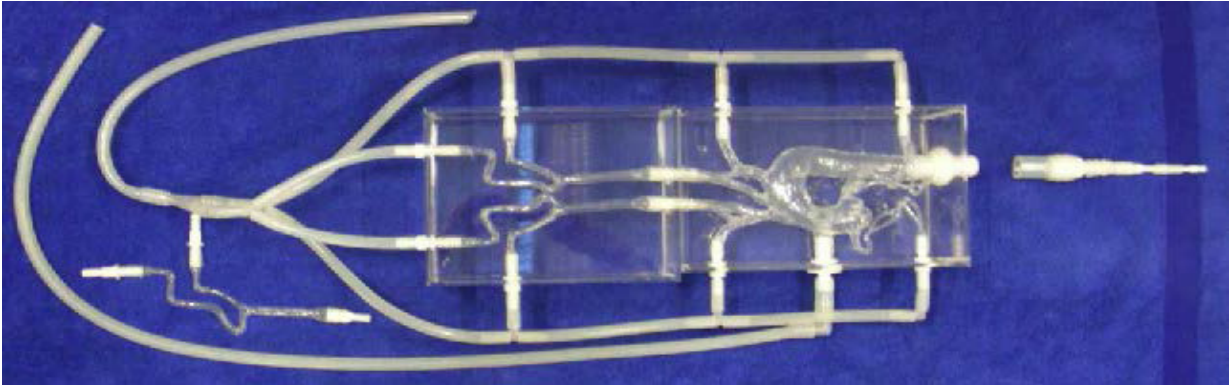


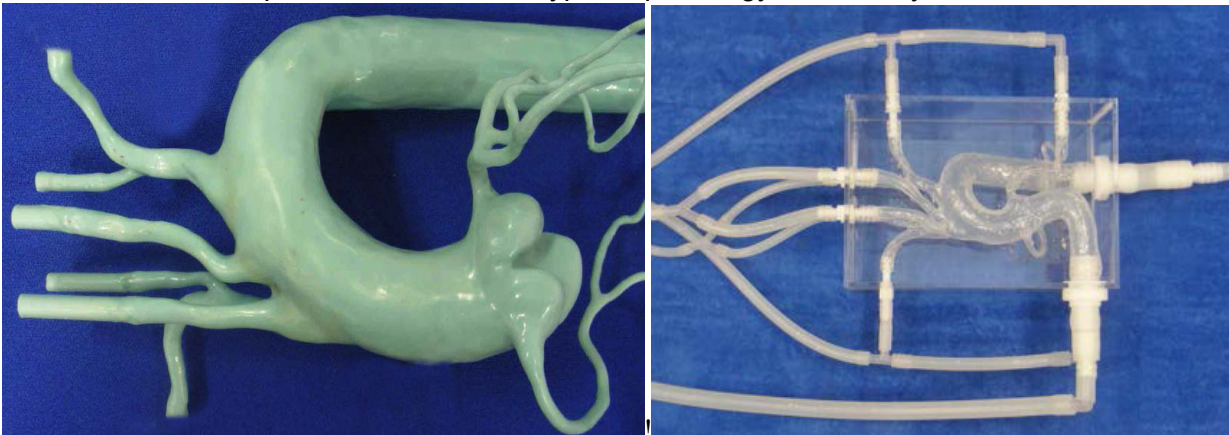


Thoracic model Ref: T-S-N-002-Type II+, version 1 and 2:

Version 1 Entry of flow under the ascending aorta. Plugged with Head and Neck stenosis bifurcations mimic model.



version 2 Green picture with detail of Type-II+ pathology. Here entry of flow at the three-cusp:



This model includes the thoracic aortic arch, the brachiocephalic trunc, the left and right subclavian arteries, the L+R vertebralis and the L+R carotids. The three modular right carotid inserts seen on page 2 are of different tortuosity = straight, "S" shape and loop shape. This model is anatomical and 1:1 in internal dimensions.

Elastrat's models are developed for: Trainings, workshops, hands-on meetings, to confirm your R&D approach, calibrate your equipment, show your devices to your clients with live demos, simply have the tissue like feeling.

All our models are manufactured to work under all imaging technologies like angiographies with contrast liquid, MRI, Doppler techniques. They are also transparent to light which training.