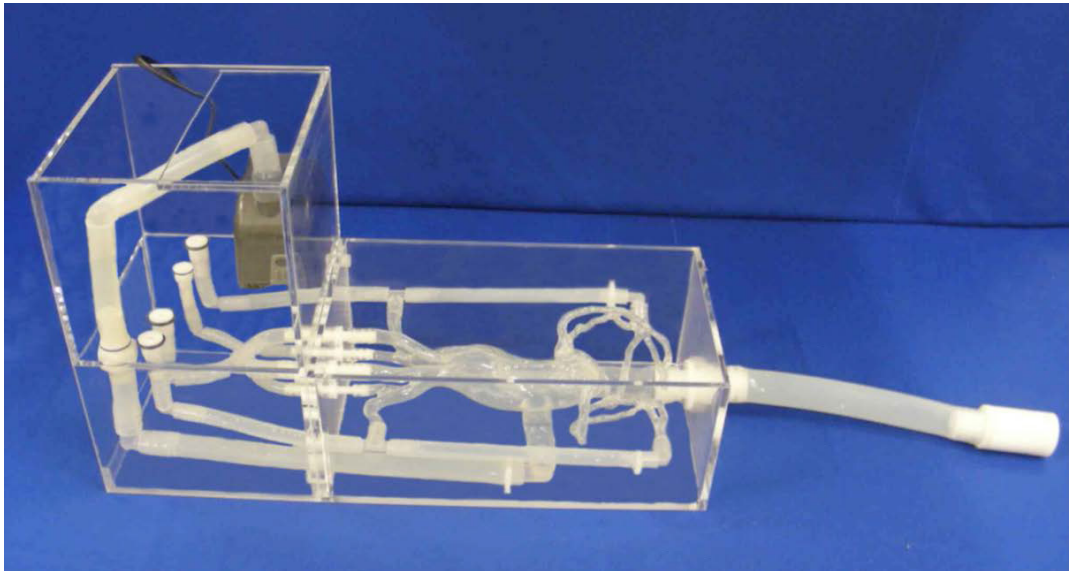




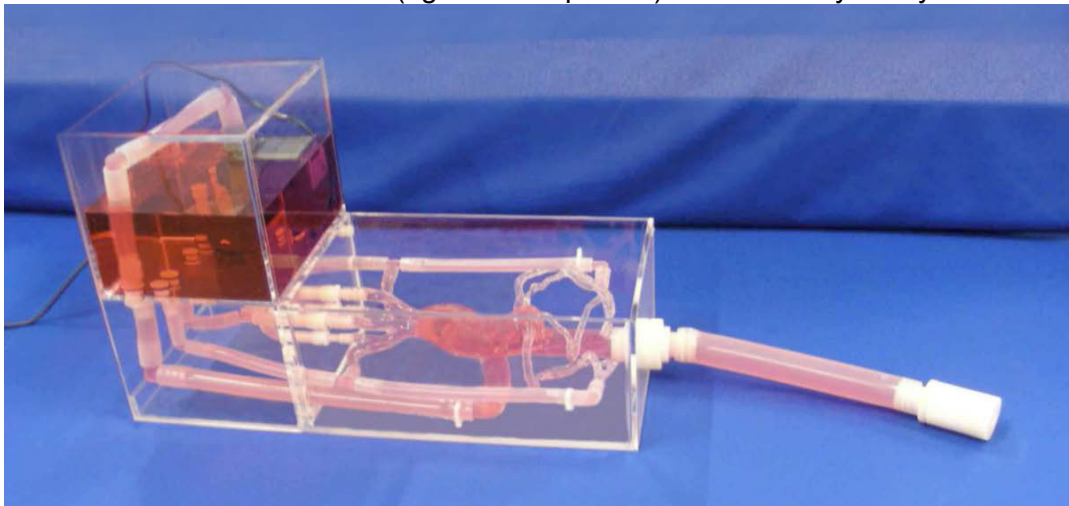
Thoracic model Ref: T-S-N-002-R+

The tank and pump are integrated in the vascular training flow model for an easy closed water circulation use. This model has a suitcase to transport it safely.



Model filled with some red dye for a better view.

A screw introducer is mounted (right side of picture) to work easily with your devices.



ELASTRAT in vitro models respect human anatomy and are designed for the development and demonstration of stents, coils and catheters. They provide a realistic environment for the simulation of endovascular procedures, presurgery training, studies and teaching purposes for interventionists.