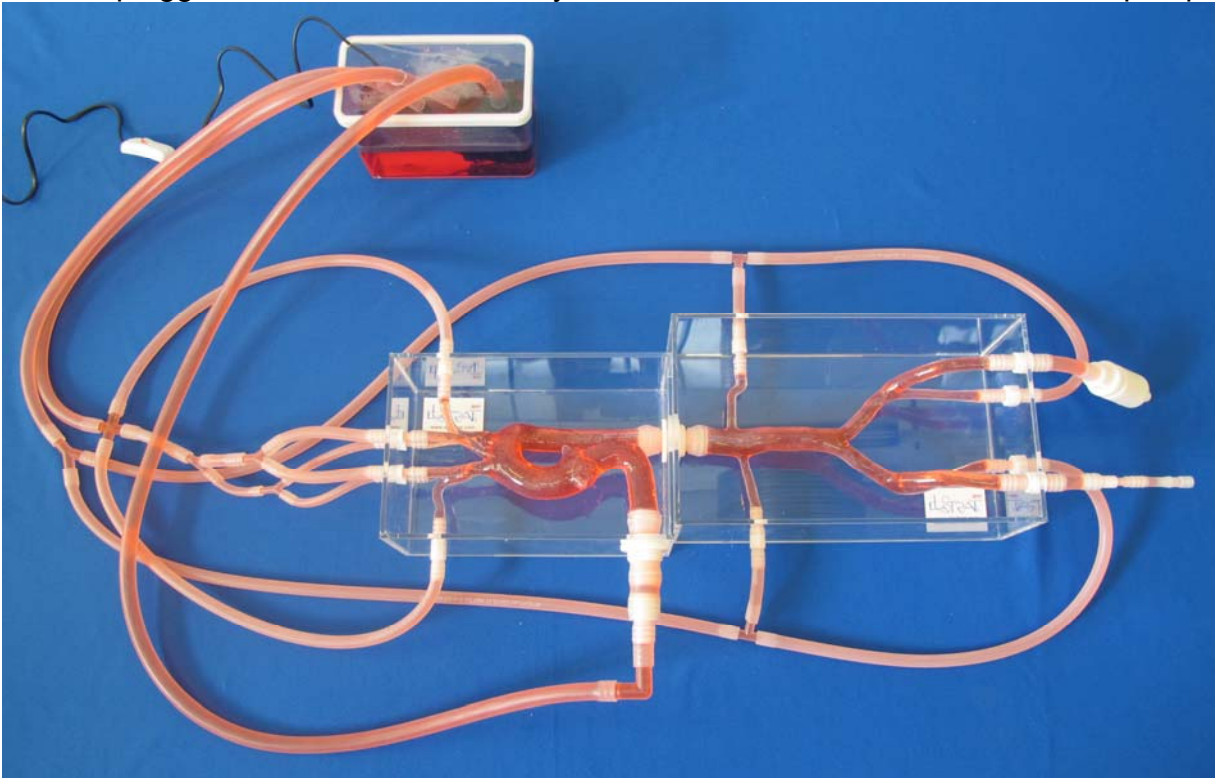


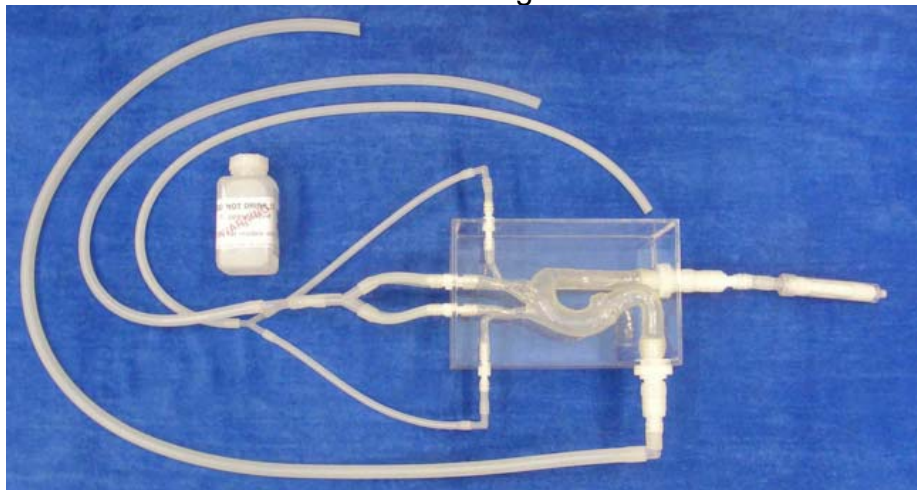


## Thoracic model Ref: T-S-N-001-v2+ (entry at 3-cusp)

Model plugged to an Abdominal, ready to work in a closed water circuit with a pump



Model working alone:



Soft silicone aortic arch model with entry of flow at 3-cusp  
Brachiocephalic trunc, left + right subclavian and vertebral arteries

ELASTRAT in vitro models respect human anatomy and are designed for the development and demonstration of stents, coils and catheters. They provide a realistic environment for the simulation of endovascular procedures, pre-surgery trainings, studies and teaching purposes for interventionists.