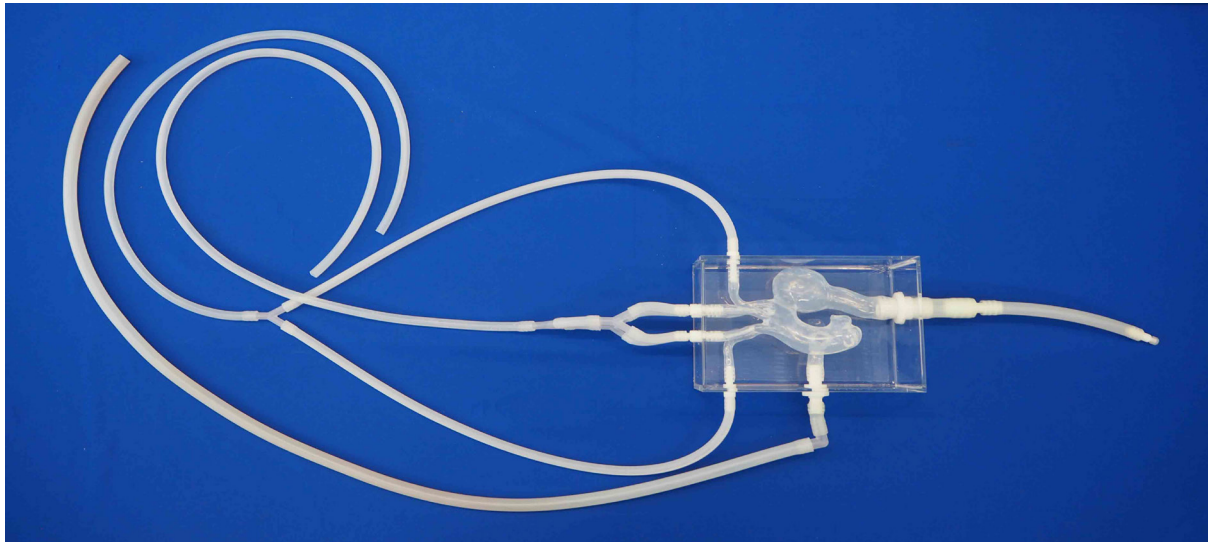


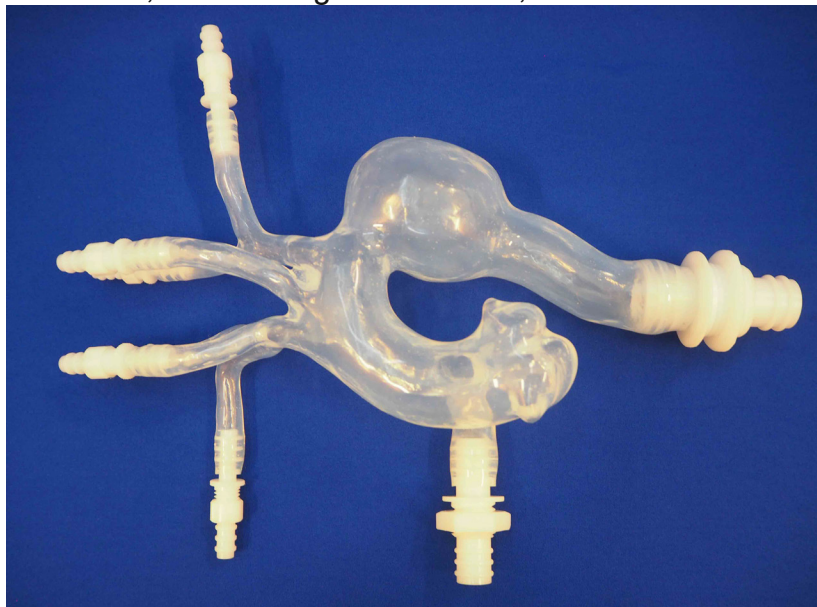


## Thoracic model Ref: T-S-A-001-v1+ = 1st version (side entry)

If desired, this model is ready to work in a closed water circuit with a pump.



Soft silicone model with aortic aneurysm and brachiocephalic trunc, the left + right subclavian, vertebral and carotid arteries.



ELASTRAT in vitro models respect human anatomy and are designed for the development and demonstration of stents, coils and catheters. They provide a realistic environment for the simulation of endovascular procedures, pre-surgery training, studies and education purposes for interventionists.