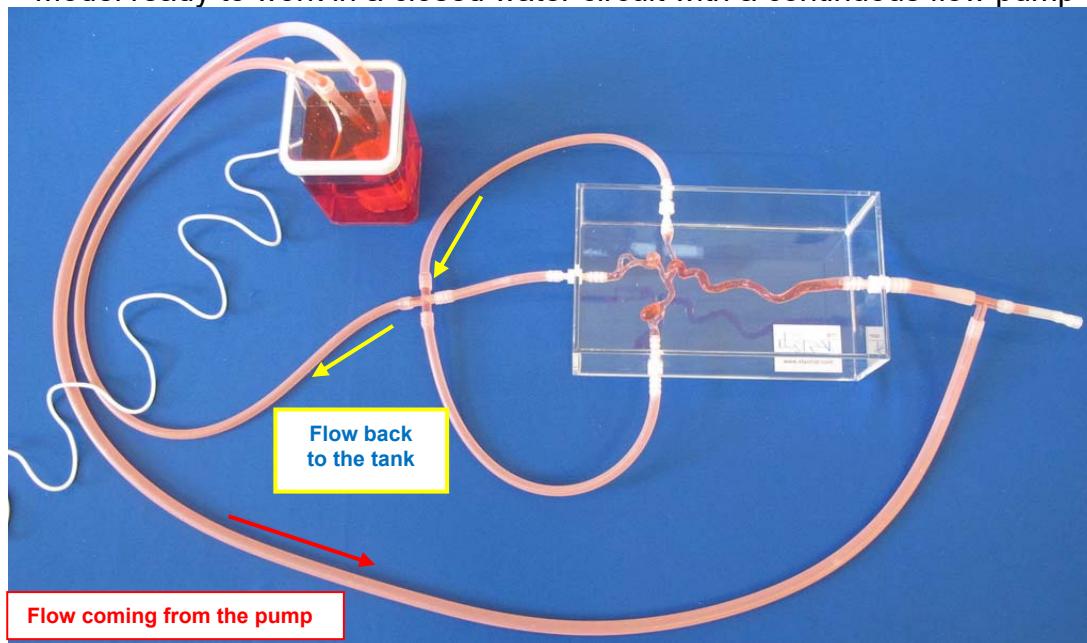


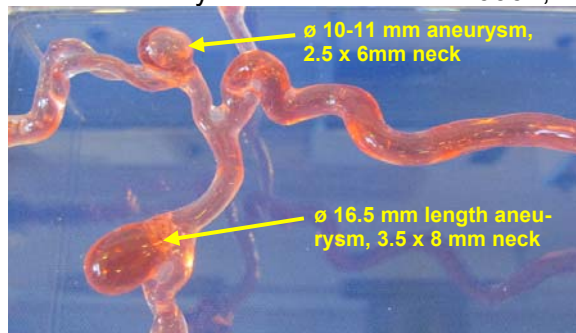


Head and Neck model Ref: H+N-S-A-006+

Model ready to work in a closed water circuit with a continuous flow pump



Larger view of this regular carotid artery model ref H+N-S-A-006+, two wide neck aneurysms:



Aneurysm 1 = top of image: Internal Dimensions: 10-11mm, neck 2.5mm x 6.0mm.

Aneurysm 2 = bottom of image: ID 10mm, length 16.5mm, neck 3.5mm x 8.0mm.

ELASTRAT in vitro models respect human anatomy and are designed for the development and demonstration of stents, coils and catheters. They provide a realistic environment for the simulation of endovascular procedures, pre-surgery training, studies and teaching purposes for interventionists.

Elastrat replicas are compatible with modern imaging modalities such as digital subtraction angiography, computed tomography and magnetic resonance imaging. Providing the use of an adequate circulating fluid, Doppler techniques can also be performed. The in vitro model's transparency to light makes them suitable for video and photographic monitoring.