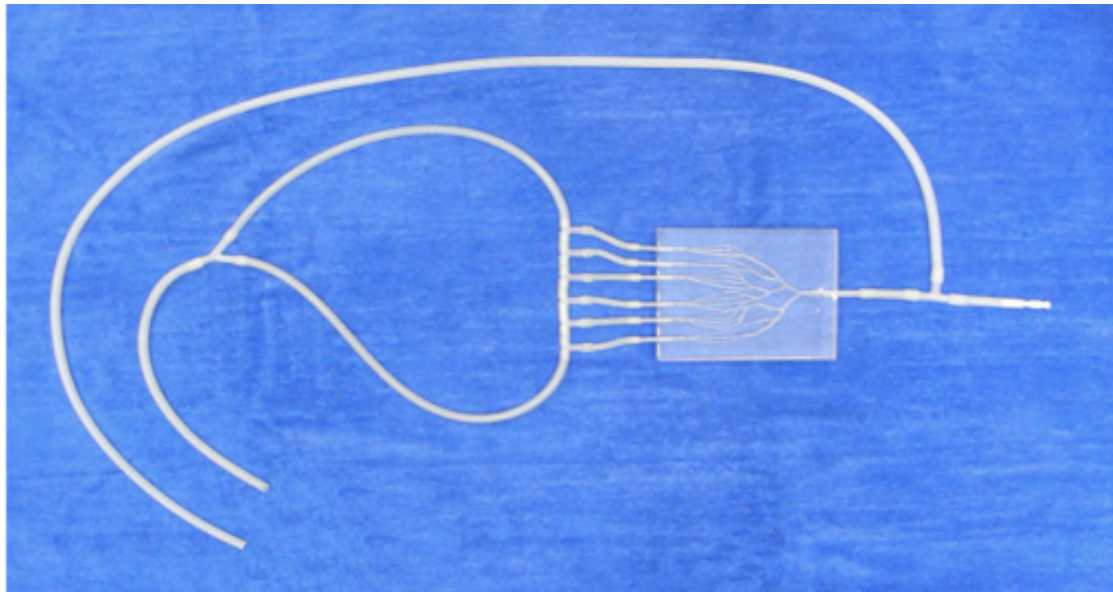




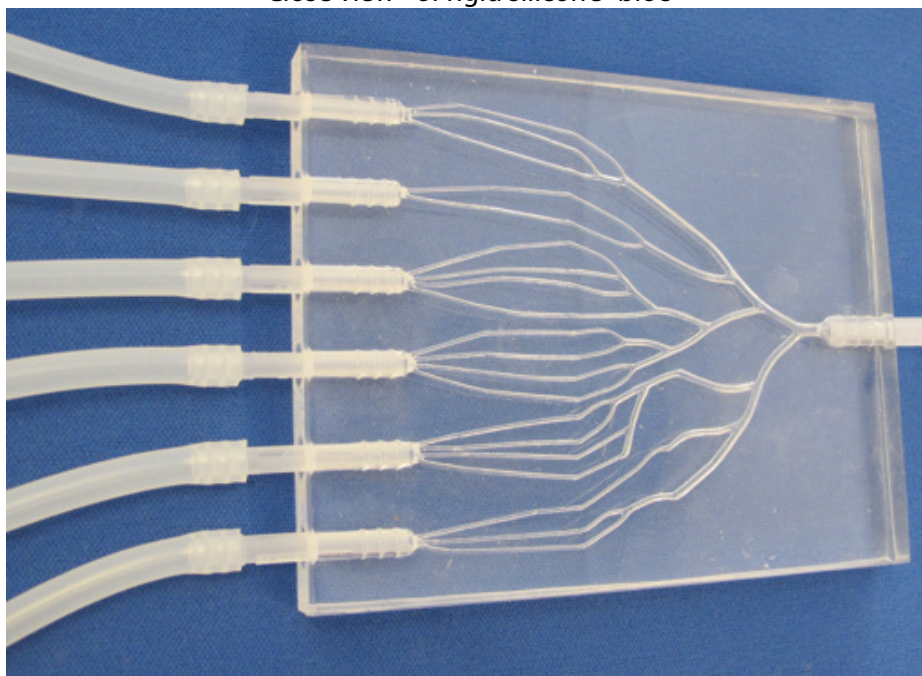
RIGID Head and Neck palm model Ref: 101-2+

Arterio -venous palm model available in a transparent rigid silicone e
(This model is longer as Ref 101 -1)

Ref: 101-2 Arterio -Venous model



Close view of rigid silicone bloc



This model simulates part of an arterio -venous malformation. This rectangular model is particularly indicated for embolization trainings with Onyx or similar products .