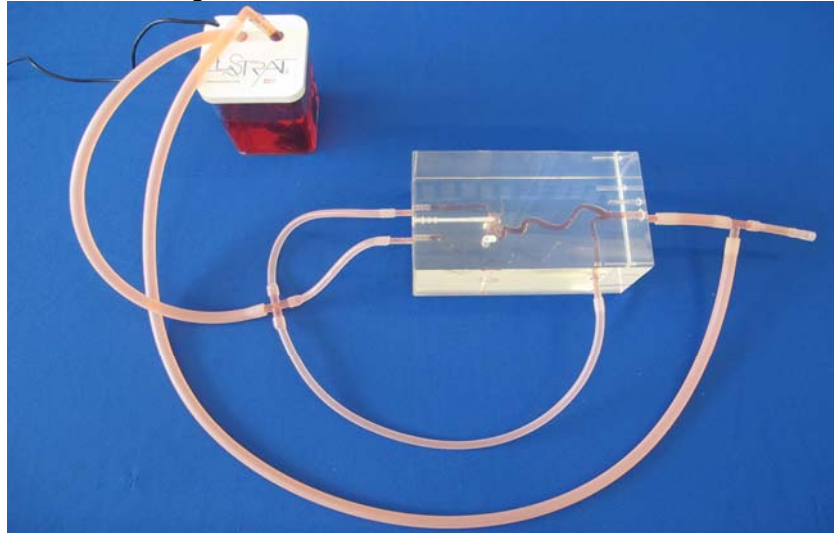


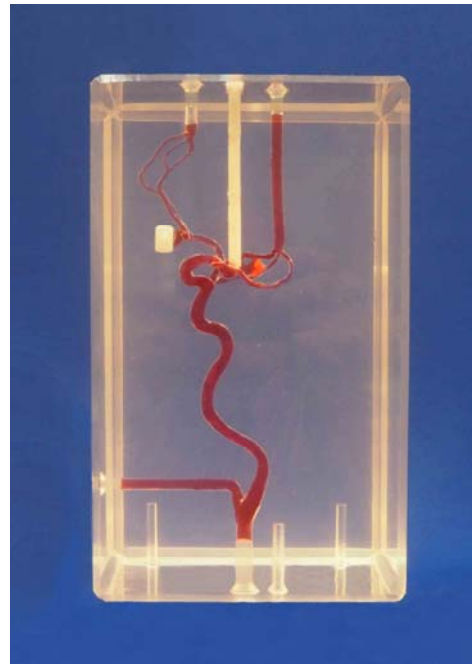
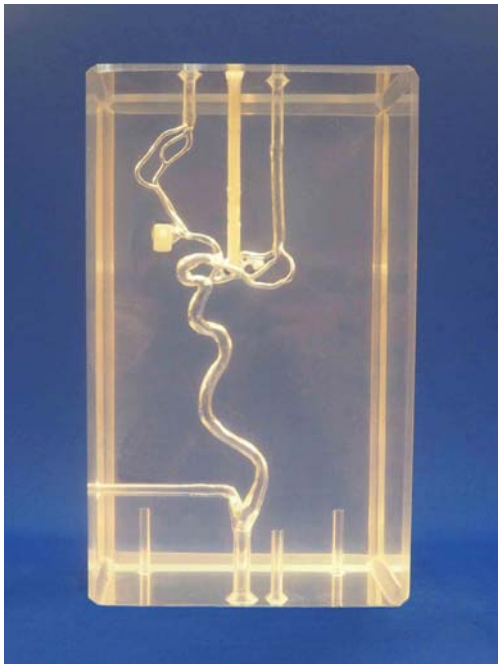


Head and Neck model Ref: H+N-R-A-Ev-003+

This model with 3 **evacuable** aneurysms is ready to work in a closed water circuit with a pump.
Training flow models for education and Hands-on.



A hook is needed to retrieve stents and coils, **uniquely** in both planned straight spots.
IMPORTANT: Otherwise, no stents can be deployed or retrieved elsewhere in this rigid silicone bloc model.



These aneurysms are located on the anterior communicating artery (max. diameter: 9 mm, max neck size: 4 mm), the posterior communicating artery (max. diameter: 8 mm, max neck size: 5 mm) and the bifurcation of the middle cerebral artery (max. diameter: 10 mm, max. neck size: 7 mm). The anterior communicating artery aneurysm presents a small bleb simulating the point of aneurysmal rupture.